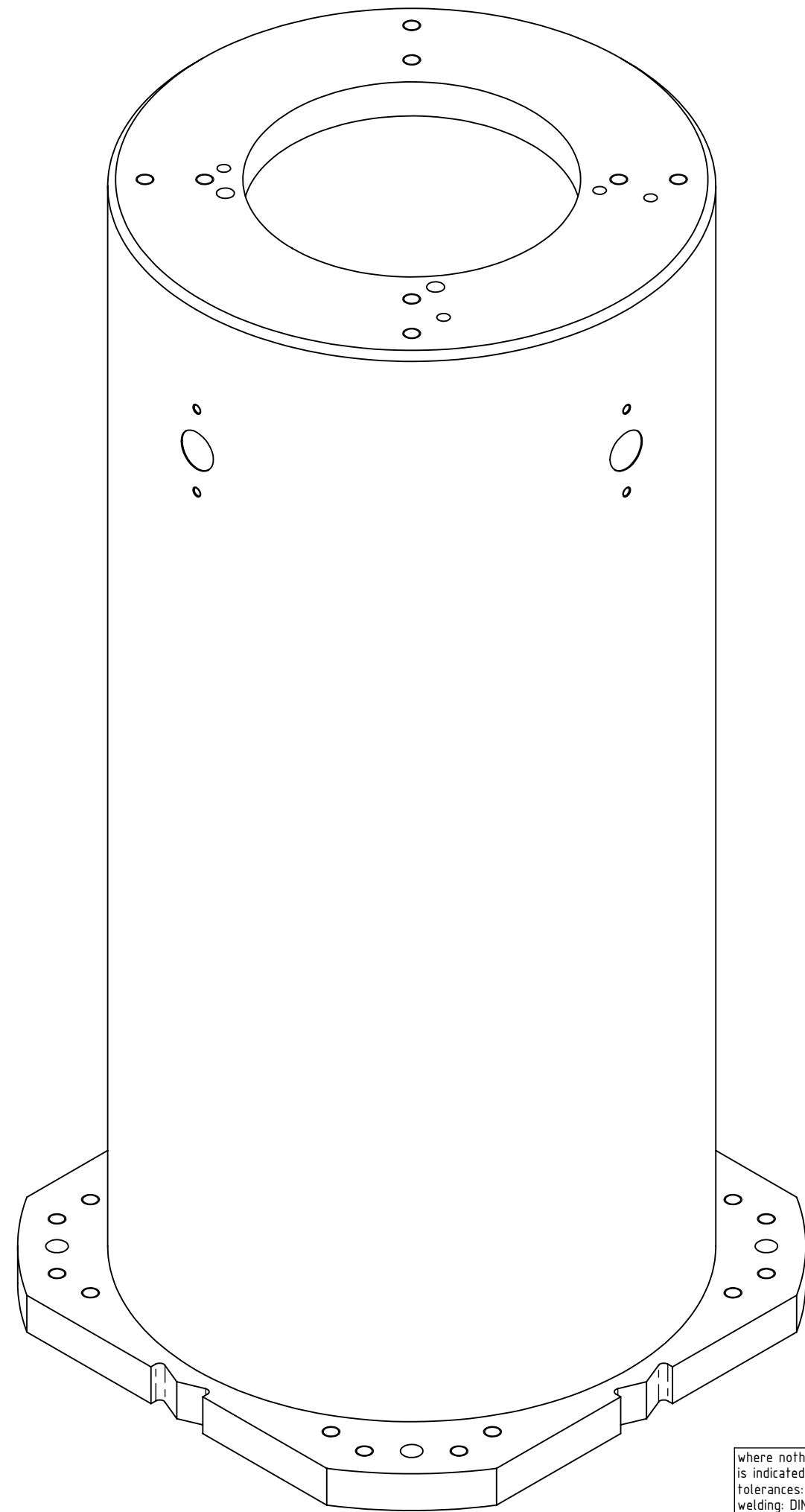
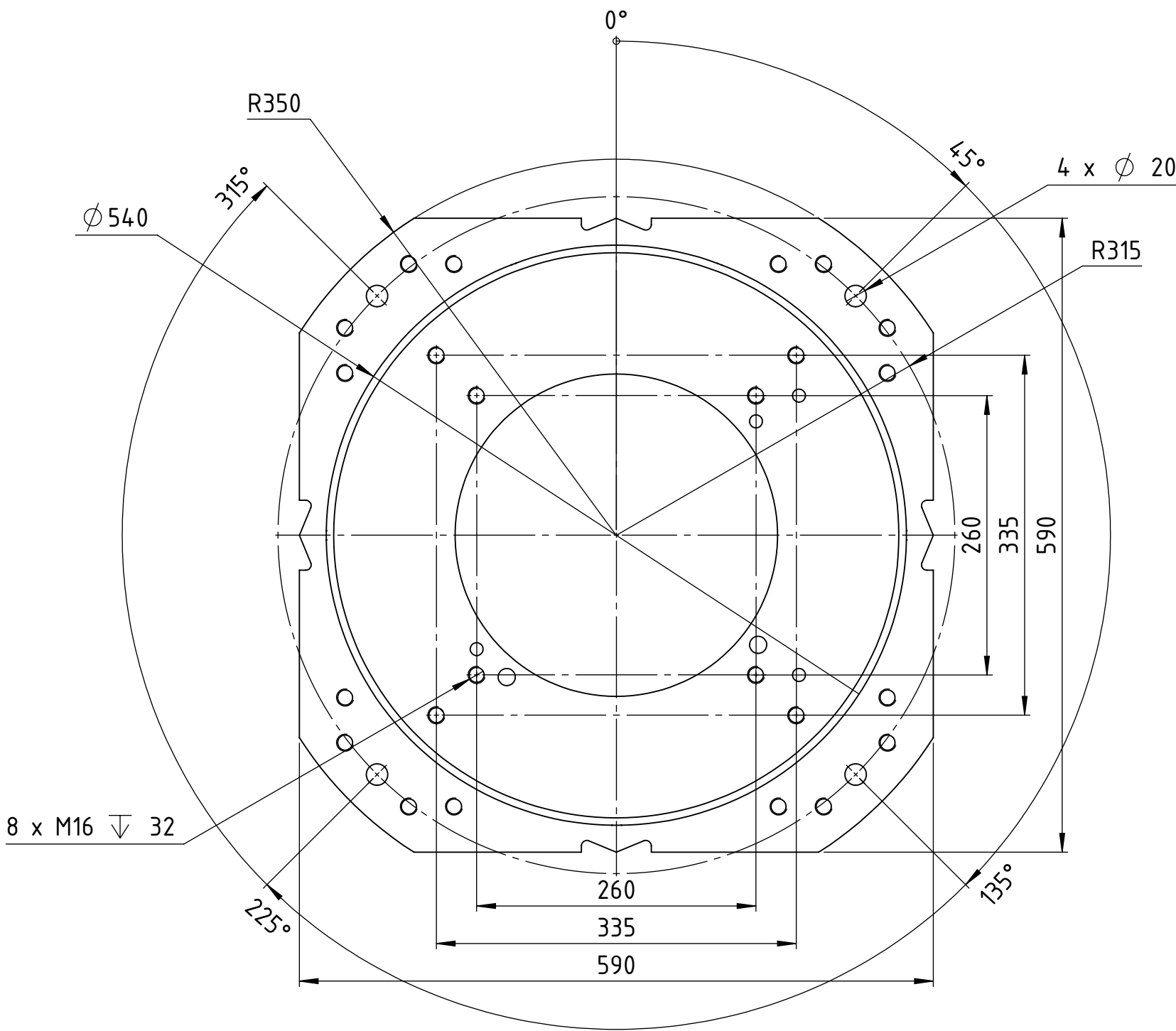
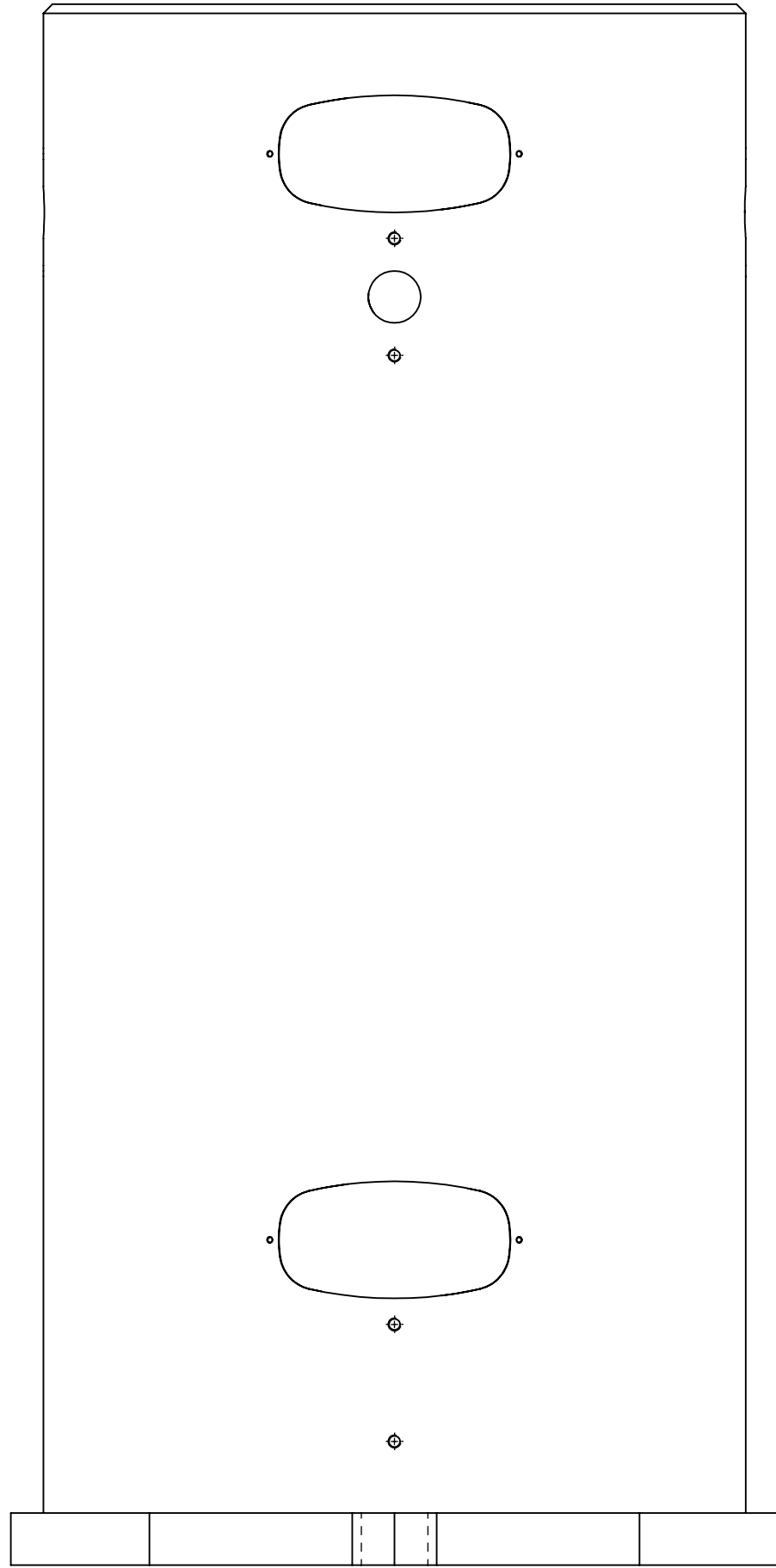
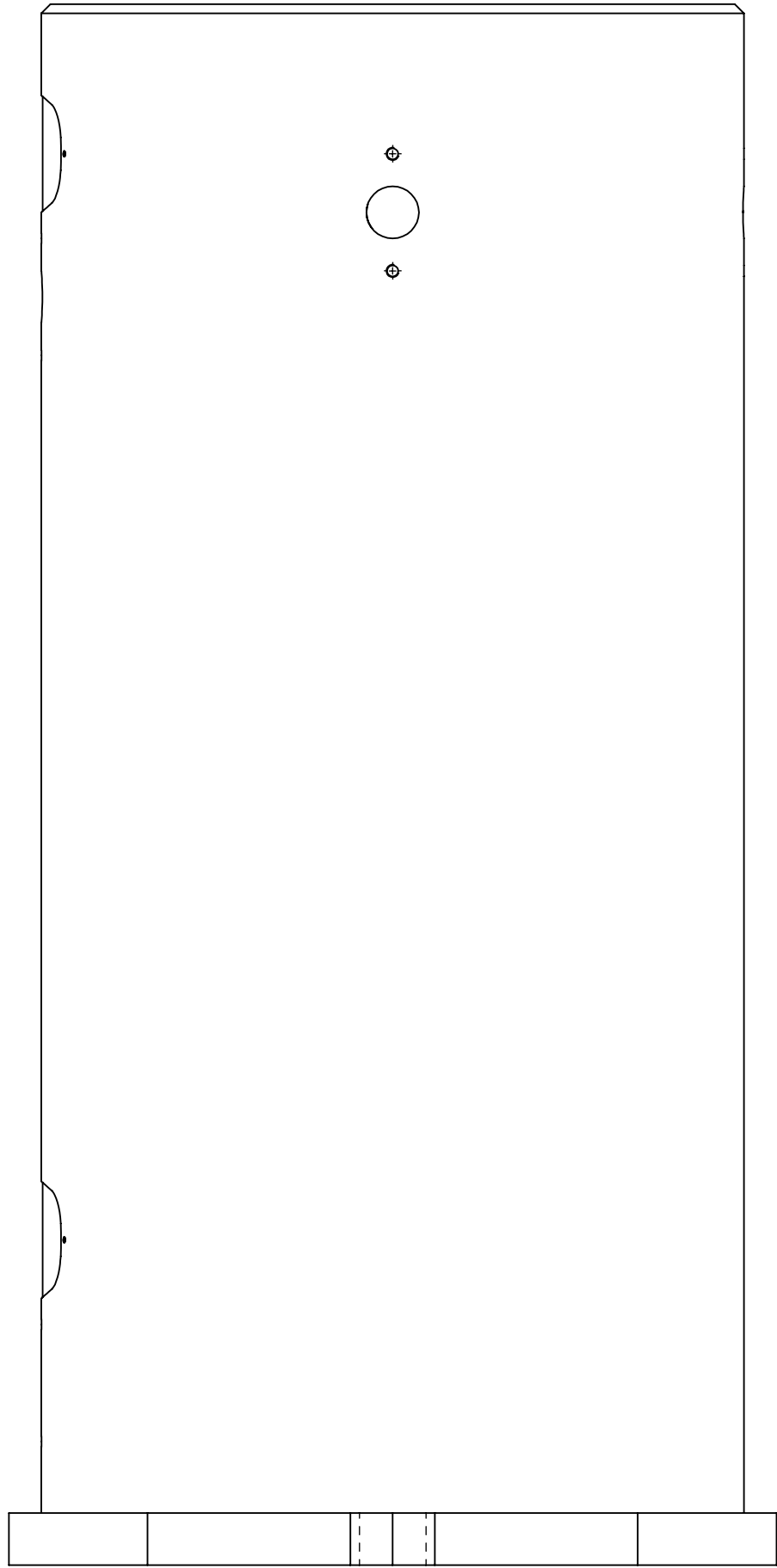
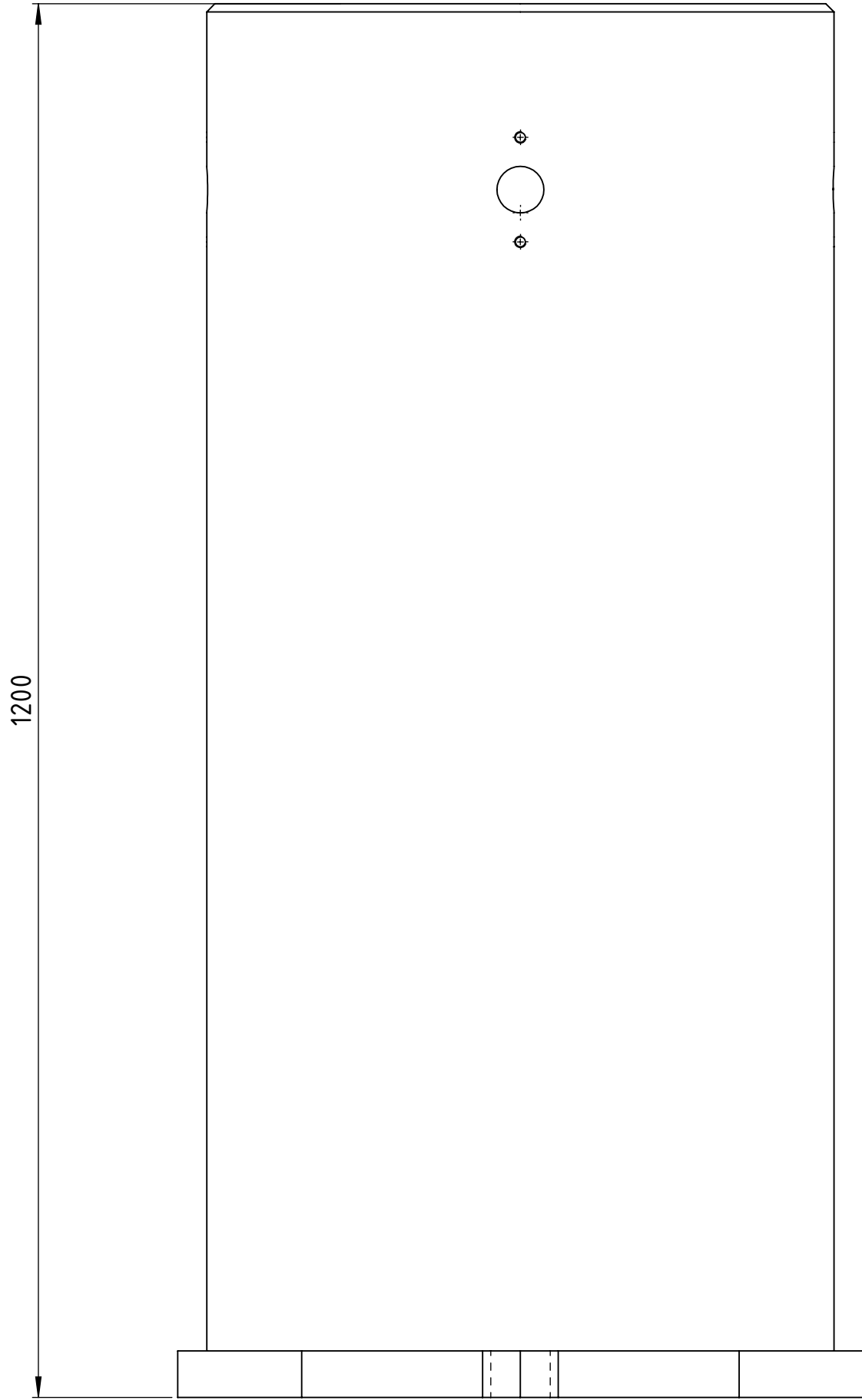
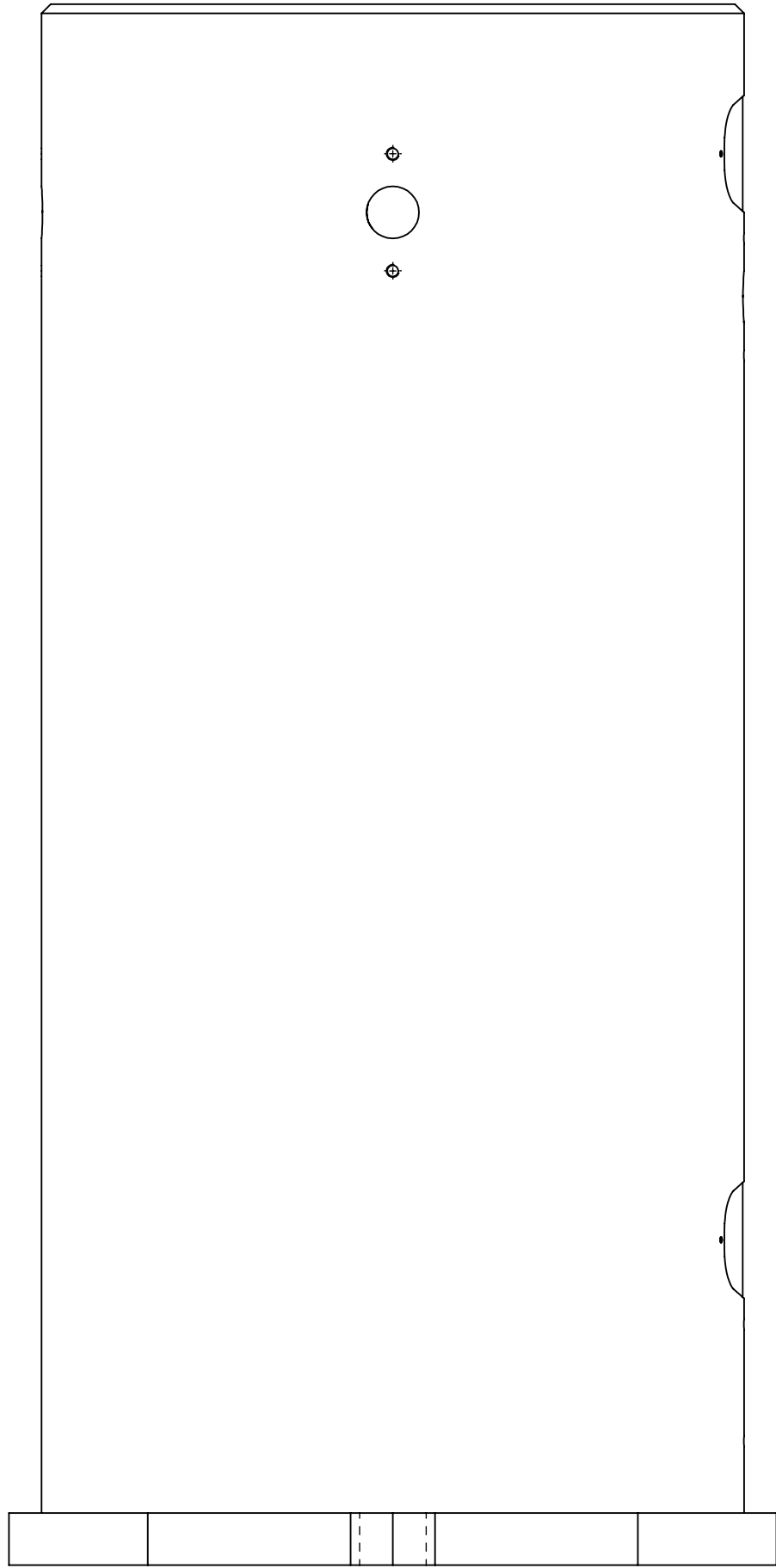


CONFIDENTIAL The reproduction, distribution and utilization of this document as well as its content is strictly prohibited without the prior written permission of Yaskawa Europe B.V. or its subsidiaries. Payment of damages. All rights reserved in the event of a patent, utility model or design.



rev.	revision text	rev.date	rev.by	appr. date	appr. by
01	improved cylinder baseplate	2021-08-24	MichNaeb	2021-08-25	Andreas
02	modified tolerances	2021-07-29	MichNaeb	2021-07-30	Andreas
03	general simplification	2021-11-29	KarlLind	2021-11-29	MichNaeb
04	center marks changed	2021-07-30	Landfira	2021-07-30	MichNaeb

where nothing else is indicated: tolerances: DIN ISO 2768-mS welding: DIN EN ISO 13920-A edges: DIN EN ISO 13715 -0.3 -0.5 0.3 (L)	status: (Released) SAP EMEA no: SAP AH no: 21914.8	YASKAWA www.yaskawa.eu.com	dimension: 1200x590x590 mm	weight: 14.7924 kg	sheet: A1
title / description: robot stand K-1200	approved: drawing-no.: 0000055322-100	created: 2021-06-24 MicNaeb	revision: 04	15 4/5	