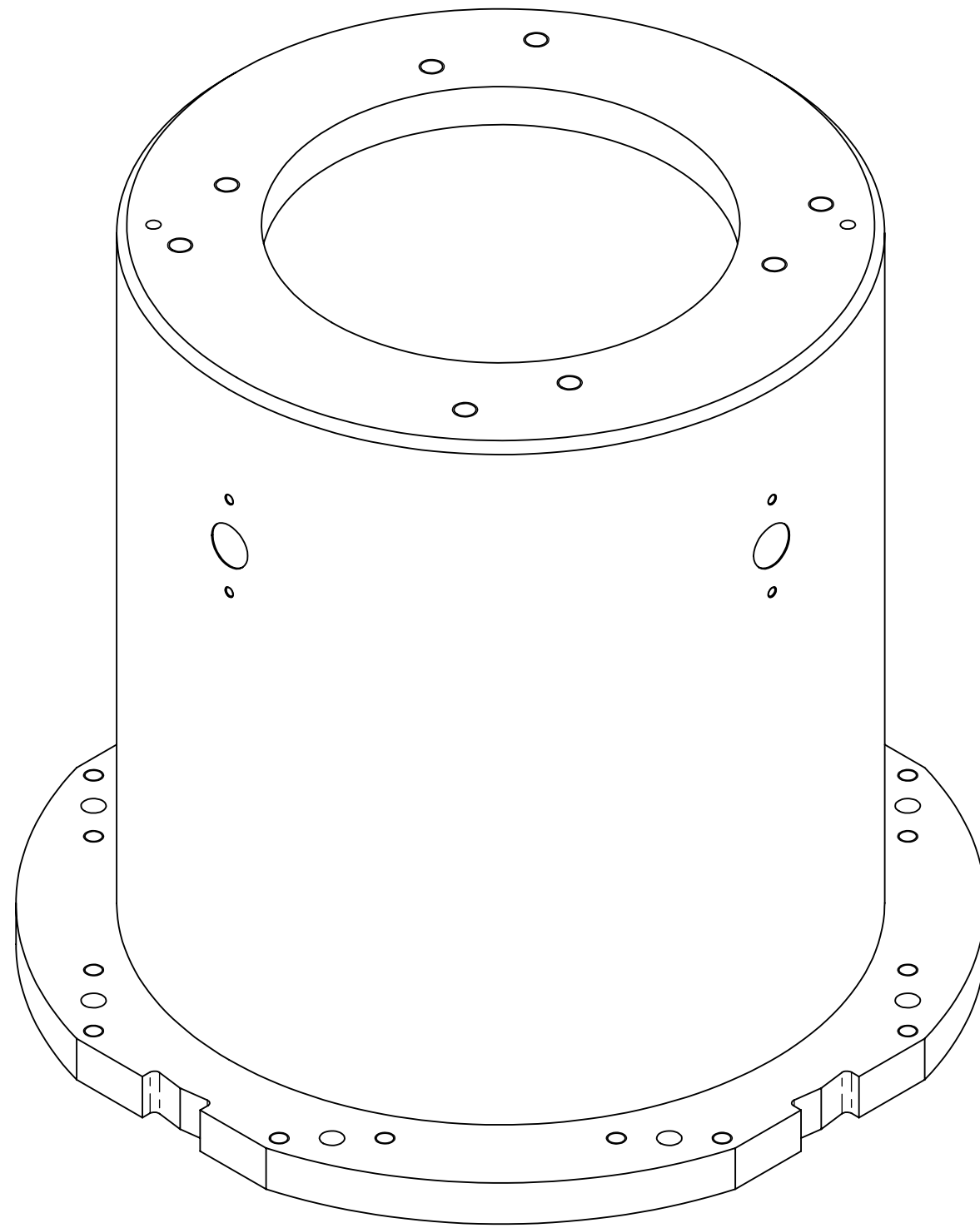
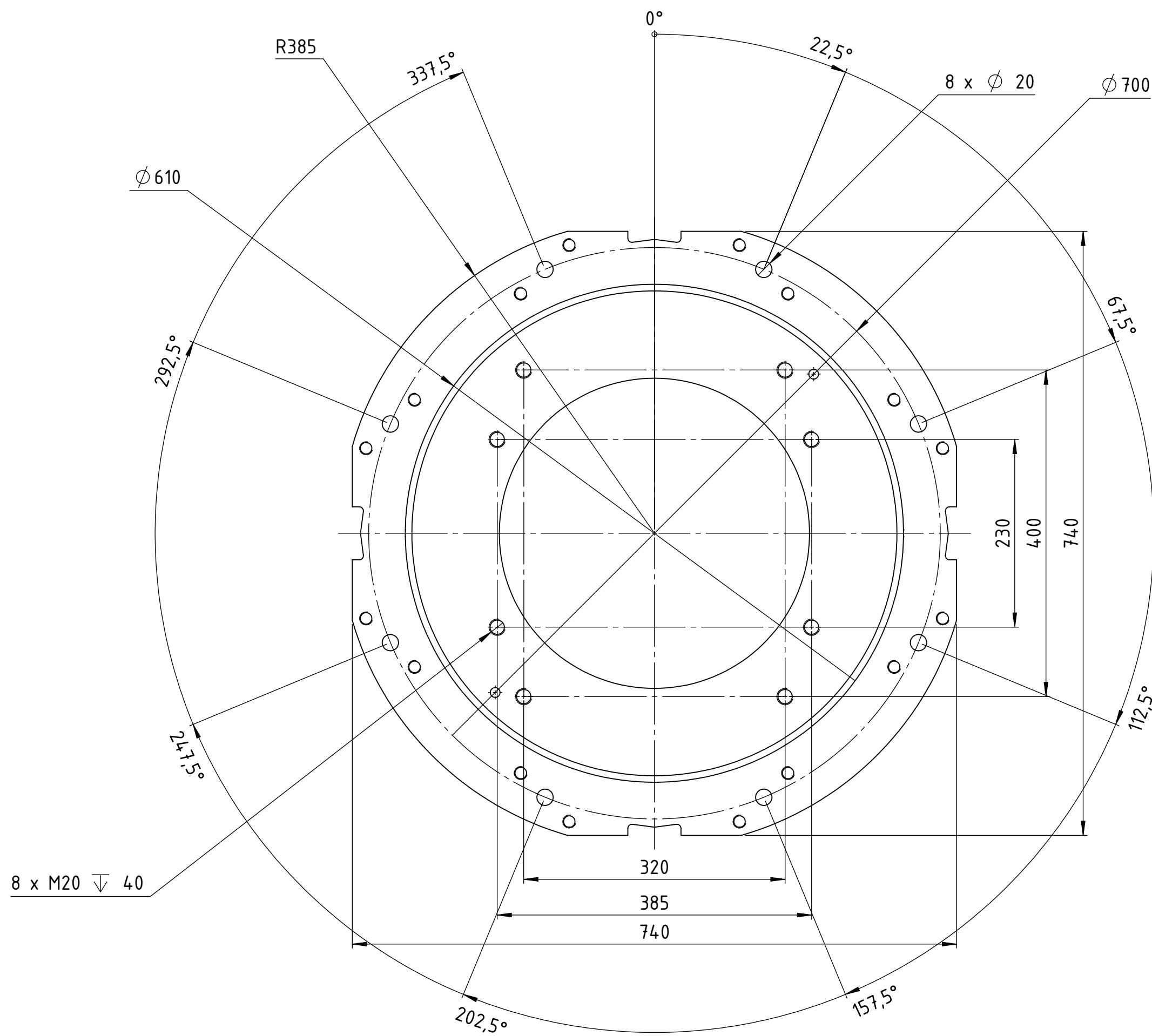
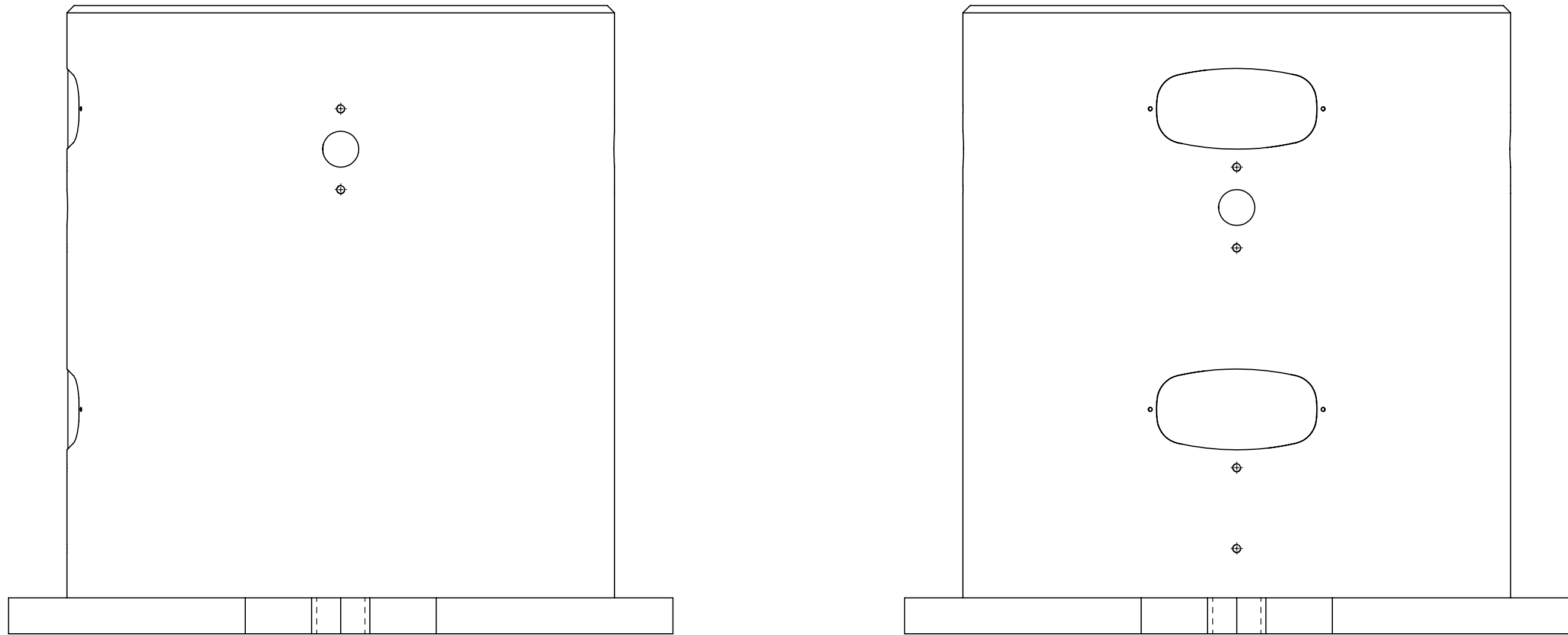
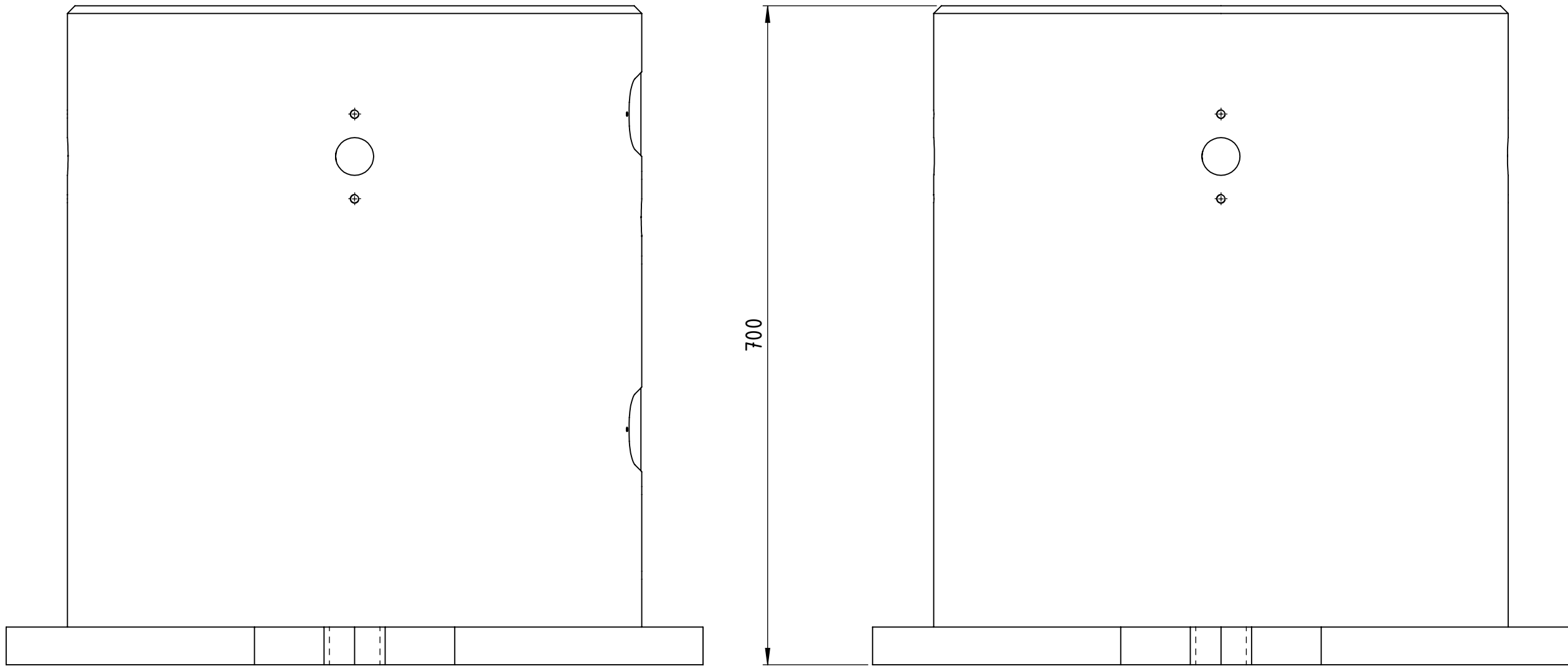


CONFIDENTIAL The reproduction, distribution and utilization of this document as well as the communication of its content to third parties is strictly prohibited. Infringement of this prohibition may result in legal action. Payment of damages. All rights reserved in the event of a patent, utility model or design.

rev.	revision text	rev.date	rev.by	appr. date	appr. by
01	modified tolerances	2023-01-10	McKneib	2023-01-10	NaefSchl
02	general simplification	2023-12-01	NaefSchl	2023-12-01	McKneib
03	increased wall thickness	2024-01-10	McKneib	2024-01-10	NaefSchl



where nothing else is indicated:	status: Released	YASKAWA		dimension:	weight:
tolerances: DIN ISO 2768-mS	SAP EMEA no:	SAP AH no:	www.yaskawa.eu.com	created:	155,298 kg
welding: DIN EN ISO 13920-A	title / description:	approved:	robot stand	drawn:	JosSchl
edges: DIN EN ISO 13715	revision:	approved:	M-700	drawn:	JosSchl
-0.3		approved:		drawn:	A1
-0.5		approved:		drawn:	15
-0.3		approved:		drawn:	4/5